




AcceleDent[®] Case Report

Robert Miller, DMD







Miller Orthodontics
Warrenton, VA



Summary

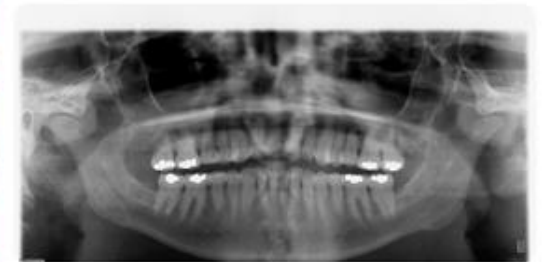
-  Female
-  45 years of age
-  Class II Open Bite
-  Projected Treatment Time: 24-30 months (with surgery or extractions)
-  Actual Treatment Time: 14 months 2 weeks (no surgery or extractions)
-  Appliances Used: Conventional edgewise appliances with 2 infrazygomatic TADS to retract maxillary posterior segments with intrusion for mandibular autorotation

Treatment Objectives

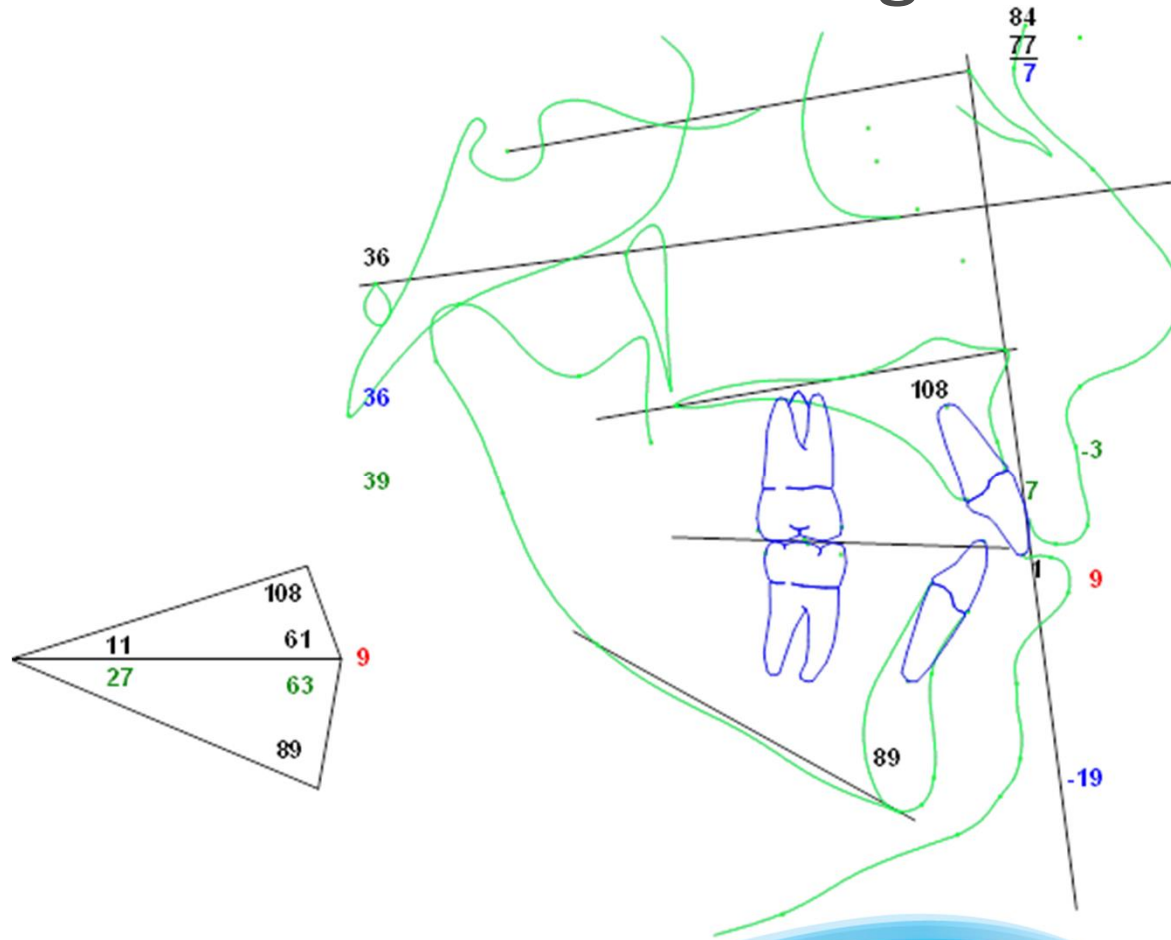
-  Reinforce thin labial tissue
-  Correct & reduce overjet
-  Minimize mandibular proclination
-  Minimally invasive surgical options were presented when orthognathic surgery was declined (mini-plates or TADS)
-  Infrazygomatic TADS and AcceleDent[®] were initiated in conjunction with maxillary edgewise appliances
-  Mandibular appliances were placed during the final 6 months



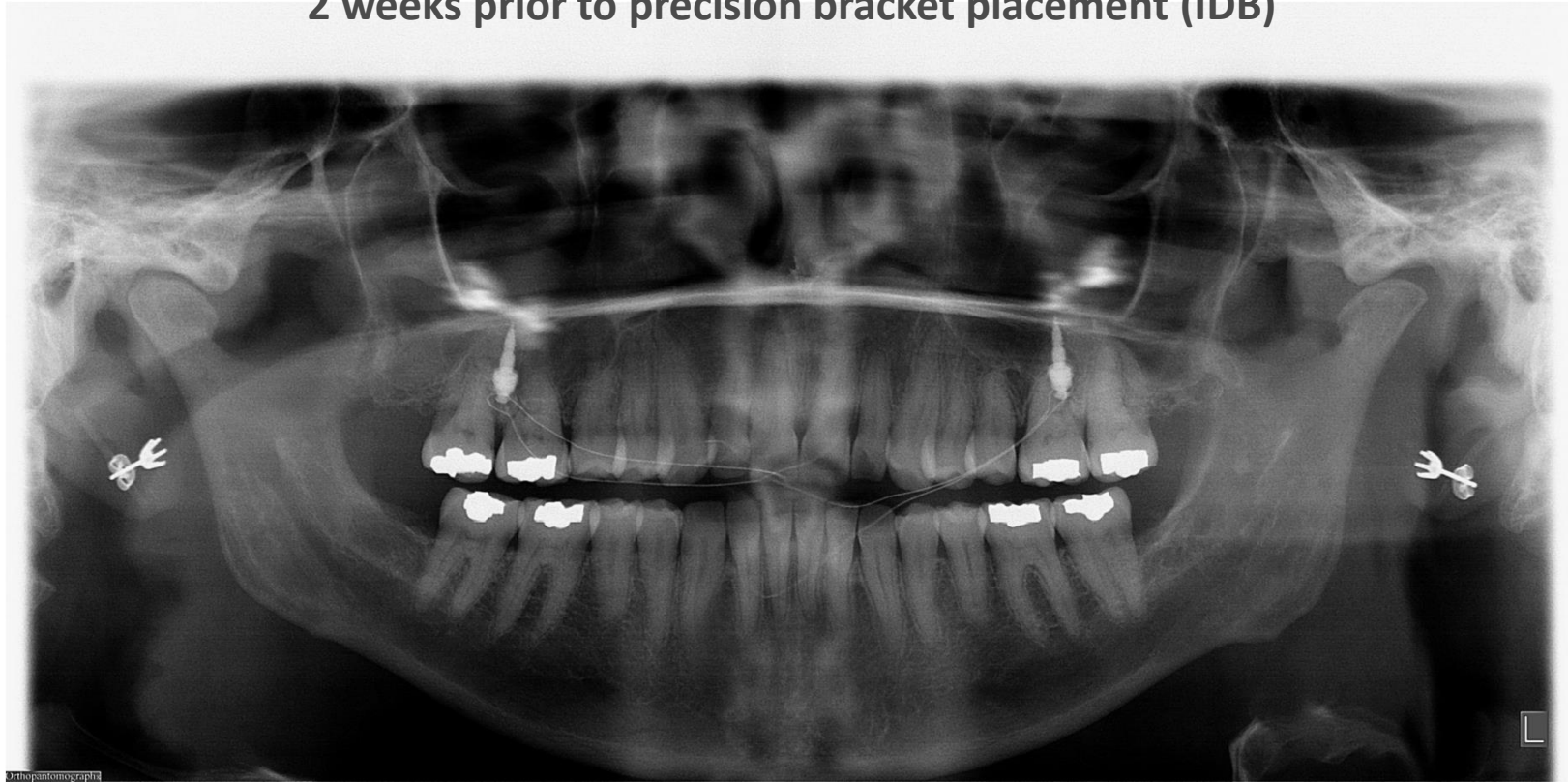
Baseline



Pre-Treatment Tracing



**Securus TADS placed inferior crest of the IZ Ridge and AcceleDent delivered
2 weeks prior to precision bracket placement (IDB)**





2-01-2012
All maxillary
appliances &
AcceleDent initiated





5-6-2012
3 Months



8-20-2012
6 Months 3 Weeks

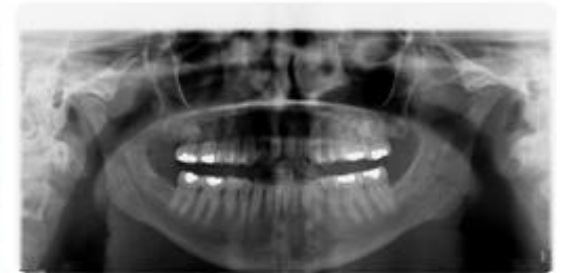


11-11-2012
9 Months 2 Weeks
Maxillary occlusal adhesive build
ups were removed

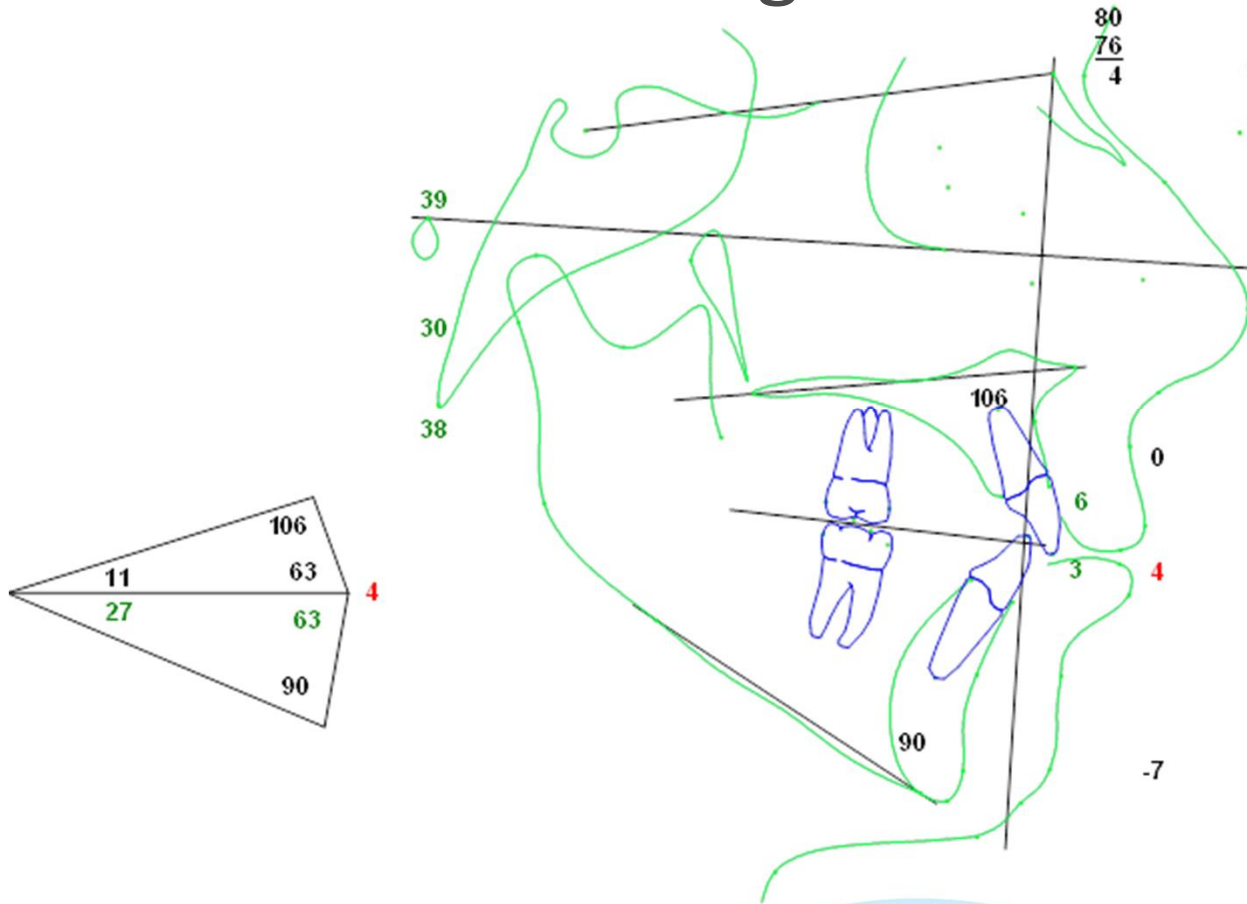


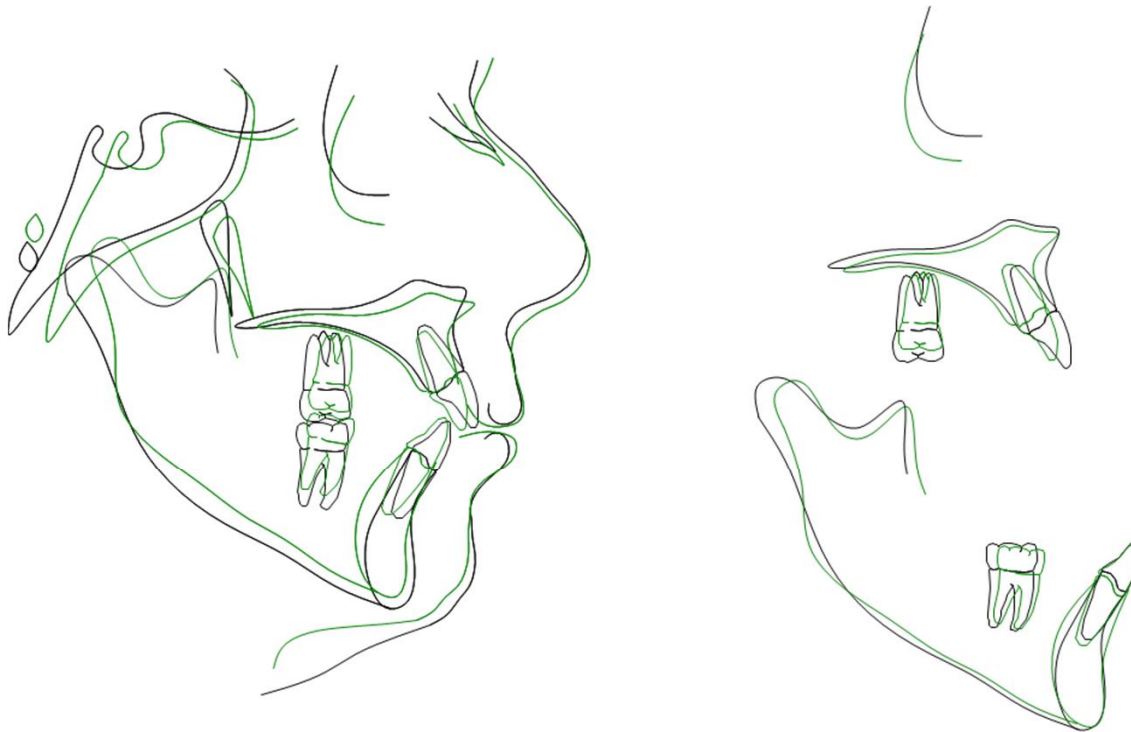


4-11-2013
Final Record
14 Months 2 Weeks



Post-Treatment Tracing





Superimpositions showing:

- “ Maxillary retraction
- “ Maxillary intrusion & vertical control
- “ Mandibular autorotation
- “ Minimal mandibular incisor changes